

# **JAZZ COURSE UK**

## **WELCOME AND INFORMATION PACK ON JAZZ COURSE UK**

**This pack includes information on our courses offered at**

**- Edinburgh -**

### **Information pack includes information on**

**The Jazz Course UK ethos  
course content  
transport links & on site facilities  
maps & diagrams**

**<http://www.jazzcourse.co.uk>**

**JAZZ COURSE UK  
57 LABURNUM DRIVE  
MILTON OF CAMPSIE  
G66 8JS  
SCOTLAND**

**TEL: +44 (0) 1360 311992**

## **CONTENTS**

Welcome & Ethos.....3

### **EDINBURGH**

Course Introduction.....5  
The “Bolt-On” course introduction.....6  
Venue Information .....7  
Transport Links.....8  
Accommodation information.....9

#### Maps/Diagrams/Timetables

District Area Map.....10  
Internal Plan of J&EVC.....11  
Sample Weekly Timetable.....12  
Photo Album (2004).....13

APPLICANT QUESTIONNAIRE FORM.....14

IMPORTANT BOOKING INFORMATION.....15

## **JAZZ COURSE UK - WELCOME PACK**

Thank you for your interest in Jazz Course UK! We are one of the UK's leading providers of short break courses for creative musicians and we trust that you will find the programs we offer enjoyable, educational and valuable. Included in this pack is everything you need to know about the course you have applied for including course objectives and schedule.

Venue information, travel directions and any other information that is pertinent to your enjoyment and stay. Information relating to detailed course descriptions, dates and fees can all be found on the Jazz Course UK website or current brochure. Once you have read through the pack, if there is anything you still need to know please contact us by e-mail or by phone.

### **Jazz Course UK Ethos & Objectives**

Our approach is to help musicians learn through a combination of ensemble playing, instrument and voice group coaching, performance and recording in a friendly, non-threatening atmosphere.

Students will be able to further develop their musical and creative skills through practical application of areas taught on the course such as jazz theory, arranging, comping, voicings, improvisation techniques etc., whilst increasing their confidence in all areas of jazz performance.

Emphasis is given to the practical elements of playing and performing. Students have the opportunity to record a CD and to perform a concert in a public venue on certain courses.

*Jazz Course UK's  
Edinburgh International Jazz Summer School*

*Set in the beautiful Scottish capital of Edinburgh, the six day Edinburgh Jazz Summer School is our flagship program. This is an exceptional opportunity to combine development in playing, recording and performing Jazz whilst enjoying the world's greatest arts jamboree, the "Edinburgh International Festival". The course benefits from having the largest tutor roster of any of our courses. This course is designed for intermediate to advanced musicians.*

*Date for the Edinburgh course can be found on our current brochures, on the website or by calling Jazz Course UK direct.*

*This information pack also includes details on the Edinburgh pre Summer School one day "Bolt-On" option for rhythm players.*

## **Introduction**

The six day Edinburgh Jazz Summer School residential program offers just about everything a musician could wish for. Tutored ensemble playing and instrumental workshops throughout the day, then jam on into the evening with your fellow students. After all this, you can then savour the world's greatest and most diverse international arts festivals taking place just a seven minute journey away by train from the nearby station!

Living on campus using the residential accommodation will help you get the very best out of your weeks music. Enjoy on-site catering and leisure facilities at the college and take advantage of easy access to and from the city centre. Six nights accommodation is included in the course fees and you may opt to extend your stay over either weekend before and after the course.

The music facilities at the college are first rate and include four studios, ten practice rooms and a main performance area. Full backline, drums, PA and keyboards are all at hand. These facilities are made available to you outside of course hours for rehearsals and more informal jam sessions as mentioned earlier.

Students on the course can expect a well structured programme focusing on improvisation, ensemble playing, performance and recording techniques, stylistic skills, Jazz harmony, composition and much more. You will not only record a CD with fellow students, but you will perform to the public and friends at the end of the course!

Vocalists work with our vocal tutor in the vocal specific training room whilst each of the instrument sections will benefit from group sessions with the instrument specific tutor.

### **NOTES**

- ***This course is aimed at intermediate to advanced instrumentalists and vocalists.***
- ***Prior improvisation experience is essential, all chromatic instruments welcome.***
- ***The course runs from 10-4.30pm each day. Recording on Friday during the day. The performance takes place on Saturday evening.***

## **RHYTHM PLAYERS “BOLT-ON” COURSE**

### **Introduction**

This course is aimed at guitarists, pianists, bassists, drummer/percussionists who may wish to prepare for their week long Edinburgh course by preparing themselves for the charts that may be used as well as brushing up on specific rhythm player skills. Prior improvisation experience is essential.

### **Schedule**

10 to 10:30 a.m.: Group meeting, introduction of tutors and tutor "performance" for students. Distribution of song lists and/or charts for possible performance.

10:45 a.m. to 12.45 (will include short break): Harmony instrument /bass /percussion group lessons with the focus on group performance and related topics (comping, swing, rhythm, the proper use of "space," improvisation in a group context, "call and response," etc.).

*12.45 to 1.15 p.m. Lunch*

1:15 to 2:00 p.m. A continuation of the 10:45 a.m. sessions.

2:00 to 2:30 p.m. Break

2:30 to 4:30 p.m. An all-group "master class" given by all of the tutors.

7:00 to 10 p.m.: "Untutored," open jam sessions.

### **NOTES**

- ***This course is aimed at intermediate to advanced instrumentalists and vocalists.***
- ***Prior improvisation experience is essential, all rhythm instruments welcome.***
- ***The course runs from 10-4.30pm on the Sunday prior to the main Jazz Course UK Edinburgh Summer School .***

## **Edinburgh – Venue Information sheet**

<b>Venue</b>	Jewel and Esk Valley College
<b>Location</b>	Milton Road East Portobello district (South-East)
<b>Travel Links</b>	Please see next page for Air / Rail / Bus / Car travel information
<b>Parking</b>	Unlimited on-site parking
<b>Catering</b>	On-site cafeteria, average meal £3, open for breakfast / lunch / dinner (breakfast included for residents) Drinks/Snack machines
<b>Disabled</b>	Performance suite is on ground level. Some ensemble rooms are accessible by stairs only.
<b>City Access</b>	City centre is 7min by train or 15min by bus.
<b>Residential</b>	Please see page x for details.
<b>Access</b>	24hr access to the college and for checking in/out of rooms. Music facilities open during course hours and between 4-9pm for jam sessions.
<b>Equipment</b>	Drums, backline - guitar, bass and keyboard amps, keyboards and vocal PA all are provided. Please bring a music stand if you are able to, there are a limited number available. Equipment can be left on the premises at your own risk.
<b>Rehearsal</b>	Ten rehearsal rooms fully equipped as outlined above. A performance area is also used throughout the week.
<b>Recording</b>	Two fully equipped studios on-line plus two others available if needed.

# **Edinburgh Jazz Summer School**

## **Transport Links**

**with Jewel and Esk Valley College, Milton Rd Campus EH15 2PP**

Jewel and Esk Valley College - Milton Rd Campus is located on Milton Road East in the Portobello district of Edinburgh. It is medium sized campus with a recognisable central building that resembles a ship!

### **Air**

For low cost airlines Go and Easyjet fly to Edinburgh from various UK airports.

Buses run every 10 minutes from Edinburgh airport to Waverley Bridge where you can change to rail from Waverley Station to Brunstane (frequent trains, takes 7 mins) which is 200 metres from the Milton Road Campus.

Typical taxi fare from the airport to the centre of Edinburgh is £10.00

### **Rail**

Scheduled services run to Edinburgh Waverley from all over the UK. Change for a train to Brunstane (frequent trains, takes 7 mins) which is 200 metres from the Milton Road Campus

### **Bus**

Frequent buses from various locations including city centre to Milton Rd Campus including numbers:

43 / 44 / 52 / 32

44 / 106 / 108 / 113 / 124 / 135

104 / 106 / 124 / 125

Lothian Region Transport

Eastern Scottish

First Edinburgh

### **Car**

The Milton Rd Campus is located in the Portobello district of Edinburgh on Milton Road East. Approaching from the city bypass A720, or A1 from the south, follow the A1 for the city centre. After the roundabout with the 'Big W' retail outlet turn right at the next roundabout onto Milton Rd East. The college is on the right hand side (see map on page x).

There is ample free parking on site for Jazz Course UK participants/residents.

### **Useful numbers:**

Edinburgh Airport

Scotrail

GNER

Citylink coaches (Scotland)

Bus infoline

Jewel & Esk Valley College

0131 333 1000

08457 550033

08457 225225

08705 505050

0131 555 6363

0131 660 1010

Go Airlines

go-fly.com

Easyjet

Rail enquiries

0870 607 6543

easyjet.com

08457 484950



## **J&EVC Accommodations**

Each room contains: a comfortable bed, wardrobe storage unit, coffee table and chair, large desk and bookshelves, vanity unit with sink, illuminated mirror and shaving point.

Other facilities include: lounge with T.V., shower and toilet facilities, a large communal kitchen with cooker, microwave, kettle and toaster, laundry with washing machines, tumble dryers and ironing equipment.

Accommodation facts at a glance:

- The cost as advertised on our website or brochures is for each room per night.
- All rooms are strictly single occupancy only.
- JEVS contains a cafeteria which provides good value lunch and dinner meals which can be bought at your discretion.
- Frequent bus services as well as an excellent train service (seven mins to Edinburgh city centre). The station is a five minute walk.
- Safe and secure with good lighting, with day and night staff present at all times.

### **Booking Residential Accommodations at JVEC**

You can book days before or after (up to two nights before, one night after) to let you get over jet lag or help you get ready for the journey home as shown below:

If you are coming with your family or friends, then they are more than welcome to use the accommodation and take in the electric 24/7 atmosphere of Scotland's cultural capital at this time. Each person within your group will be given a separate room and will be charged at our advertised rates. Remember, all rooms offered are SINGLE OCCUPANCY.

### **Booking Accommodation Checklist**

- You must book a consecutive, non interrupted run of nights for the duration of your stay.
- You can book up to 2 nights before and 1 night after the course begins/ends.
- Family and friends can make use of the accommodation for the duration of the course. They will be charged the same low rate as the student participating on the Edinburgh course.
- All rooms are single occupancy, each person must have their own room.
- You must make your total number of residential days booking when you order up the Edinburgh International Jazz Summer School. Clearly state how many people will be in your party.

### **Notes & Disclaimer**

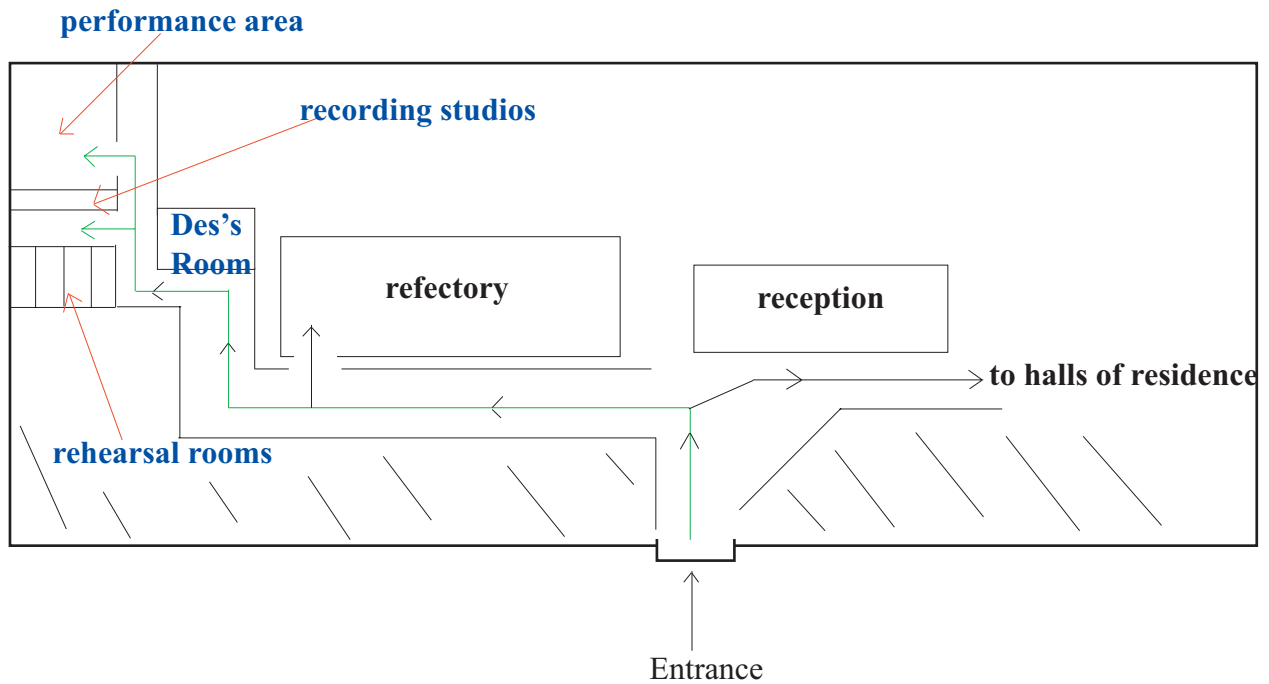
- Jazz Course UK has taken every care to ensure that the facilities as offered by Jewel & Esk Valley College are as advertised. The infantry as shown for each room, however, may be subject to change at the discretion of the college.
- By booking accommodation, you agree to respect the room and its contents. You also agree to respect the privacy of other students.

DISTRICT AREA MAP OF EAST EDINBURGH WITH DIRECTIONS TO JEVC



The Milton Rd Campus is located in the Portobello district of Edinburgh on Milton Road East. Approaching from the city bypass A720, or A1 from the south, follow the A1 for the city centre. After the roundabout with the 'Big W' retail outlet turn right at the next roundabout onto Milton Rd East. The college is on the right hand side as shown by yellow box above. There is ample free parking on site.

**Internal Plan of Jewel & Esk Valley College**



**Notes:**

*The performance area is used at the beginning of each day for a group meet and at the end of each day for group performance and is also used for the recording session. The rehearsal rooms are used (along with the performance area) for ensemble practice. The vocal room is on the 4th floor. The piano room is on the 3rd floor. Guitar, bass and drum workshops are in various locations. You will be directed to these areas during the week. The Edinburgh week will begin in the performance area as shown.*

*Signs will be displayed to help you orientate yourself around the college.*

**Toilets:**

*Men - ground and 3rd floor.*

*Ladies - 2nd and 4th floor.*

**JAZZ COURSE UK WELCOME/INFORMATION PACK - Edinburgh**

**JAZZ COURSE UK - EDINBURGH INTERNATIONAL JAZZ SUMMER SCHOOL 2004 - Intermediate/Advanced level**

	Monday	Tuesday	Wednesday	Thursday	Friday	Saturday
10.00-11.15	Arrival, welcome and registration. Refreshments will be made	Ensemble session Singers will take part in a singer specific warm up session with	Ensemble session Singers will take part in a singer specific warm up session with	Ensemble session Singers will take part in a singer specific warm up session with	<p><b>When an ensemble is not recording, it will be expected to rehearse for the assigned recording session as</b></p> <p><b>Rehearsal rooms open for untutored band practice for the</b></p>	
11.30-12.45	Ensemble session Initial band ensembles created at this time.	group instrument class with specified tutor	Ensemble session	group instrument class with specified tutor		
1.25-2.45	Ensemble session Lecturers give out new ensembles formations.	Ensemble session	Ensemble session	Ensemble session		
3.00-4.00	Performance session All musicians to congregate in the performance area for a group performance	Performance session All musicians to congregate in the performance area for a group performance	Performance session All musicians to congregate in the performance area for a group performance	Performance session All musicians to congregate in the performance area for a group performance		
	rehearsal rooms open for jam sessions until	rehearsal rooms open for jam sessions until	rehearsal rooms open for jam sessions until	rehearsal rooms open for jam sessions until	rehearsal rooms open for jam sessions until	GIG 7.00pm - 9.00pm



# **Jazz Course UK**

## **Applicants Questionnaire**

**Name** \_\_\_\_\_

**Primary instrument** \_\_\_\_\_

**Date of Birth** \_\_\_\_\_

**What styles of music do you play?** \_\_\_\_\_

**Do you improvise and, if so, to what standard?  
(ie. Beginner/Intermediate/Advanced)** \_\_\_\_\_

**How would you describe your music reading skills?  
(ie. Beginner/Intermediate/Advanced)** \_\_\_\_\_

**Do you hold any music exam certificates (practical/theory)? Please list**

\_\_\_\_\_

**Have you ever played in a group or ensemble?** \_\_\_\_\_

**Have you ever recorded music before?** \_\_\_\_\_

**Have you ever played in a live performance situation?** \_\_\_\_\_

**Have you attended other Jazz or music courses/summer schools before? Please list**

\_\_\_\_\_

**How did you hear about Jazz Course UK?** \_\_\_\_\_

**Please return to:**

Jazz Course UK  
57 Laburnum Drive  
Milton of Campsie  
G66 8JS

**This information will help us to place you in an appropriate ensemble.**

**BOOKING INFORMATION**

**Important!**

We recommend that you always contact us to check that the course you are interested in meets your requirements (including accomodation) *before* booking, as any fees are non-refundable once paid. If you feel you have made a booking in error, or you think you have overpaid, please contact us within 48 hours of making the booking.

**<http://www.jazzcourse.co.uk>**

**JAZZ COURSE UK  
57 LABURNUM DRIVE  
MILTON OF CAMPSIE  
G66 8JS  
SCOTLAND**

**TEL: +44 (0) 1360 311992**